

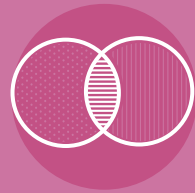
More **comprehensive information**  
for better **treatment decisions.**

Prosigna<sup>®</sup>  
BREAST CANCER ASSAY

Prosigna<sup>®</sup>  
BREAST CANCER ASSAY



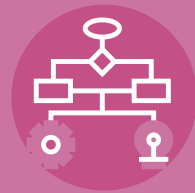
Provides more accurate prognosis which is the **foundation of treatment recommendations**<sup>1</sup>.



Prosigna<sup>®</sup> combines **tumour gene expression and clinico-pathological factors** in a single 10-year Risk of distant Recurrence (ROR) score<sup>2,3</sup>.



The only breast cancer prognostic test identifying the **four PAM50 molecular subtypes**.



Easy access to local testing with **faster turnaround times**.

**2nd generation test**  
that more comprehensively  
**informs treatment decisions.**



More Accurate  
Prognostic  
Score

Intrinsic  
Subtype  
Identified

Clinical  
Pathological  
Factors  
Integrated

1. Sestak I, Buus R, Cuzick J, *et al.* JAMA Oncol. 2018; 4(4):545-553  
2. Kos *et al.* Breast Cancer Res, 2014, 16:103  
3. Alexandre *et al.* Cancer Manag Res, 2019; 11: 10353-10373

# Prosigna® more accurately identifies the low-risk group with better outcomes and the high-risk group with worse outcomes<sup>1</sup>.

| 2 <sup>nd</sup> GENERATION ASSAY (Prosigna®)   | 1 <sup>st</sup> GENERATION ASSAY   |
|--|--|
| <ul style="list-style-type: none"> <li>50 genes</li> <li>Gene expression + clinical features</li> <li>Local testing</li> </ul>   | <ul style="list-style-type: none"> <li>21 genes</li> <li>Gene expression only</li> <li>Samples need to be sent to the US</li> </ul>  |
|  |  |
| <p><b>27%</b> of patients are <b>Low Risk</b> with 92.3% rate of DRFS*</p> <p><b>38%</b> of patients are <b>Int. Risk</b> with 79.6% rate of DRFS*</p> <p><b>35%</b> of patients are <b>High Risk</b> with 69.9% rate of DRFS*</p> | <p><b>50%</b> of patients are <b>Low Risk</b> with 85.4% rate of DRFS*</p> <p><b>31%</b> of patients are <b>Int. Risk</b> with 79.8% rate of DRFS*</p> <p><b>19%</b> of patients are <b>High Risk</b> with 74.9% rate of DRFS*</p> |
| <p>●●● No recurrence<br/>○●○ Recurrence</p>  | <p>●●● No recurrence<br/>○●○ Recurrence</p>  |
| <b>10 YEARS PROGNOSIS</b>  | <b>5 YEARS PROGNOSIS</b>   |

## Clinically Validated Algorithm Generates a Prosigna® Score for Each Patient.

**Prosigna Score =**  
 $aR_{LumA} + bR_{LumB} + cR_{Her2e} + dR_{Basal} + eP + fT$   
 (where a, b, c, d are Pearson's correlation to centroids and e, f are proliferation and gross tumor size)

**Prosigna Score =** Nodal Status + Gross Tumor size + Pearson's correlation to centroids + Proliferation + Gross score tumor size = **Patient Report**

<sup>1</sup>**DRFS:** Distant Recurrence Free Survival. The probability of developing recurrence were obtained from a bespoke data analysis of the TransATAC study (Sestak I, Dowsett M, Cuzick J. NICE Request - TransATAC Data Analysis -2017. Illustration adapted from Harnan S *et al.* Tumour profiling tests to guide adjuvant chemotherapy decisions in early breast cancer Health Technol Assess. 2019 Jun;23(30):1-328

## How does the Prosigna® Assay work?

- 1** Extract RNA from FFPE\* WLE tumour sample
- 2** Test RNA using Prosigna® Assay on the nCounter Analysis System
- 3** Capture expression profile of patient's tumour
- 4** Patient Report

  - Intrinsic Subtype identified
  - Risk of Recurrence (ROR) within 10 years
  - Risk of Recurrence (ROR) 5-10 years (late relapse)
  - Clinicopathological factors like tumour size and nodal status incorporated in the score

\*FFPE: Formalin Fixed Paraffin Embedded Tissue.