

REGENERATIVE PRODUCTS

USA

20
24

CITAGENIX
The Regen Company

WHO IS CITAGENIX?

Citagenix is a premier supplier of grafting products to dental surgeons, periodontists, and implant dentists across North America. We are a pioneer in offering innovative dental Bone Grafts, Membranes, Surgical Instruments, Regen Accessories and related Specialized Instruments.

Our customers know us for our complete product range and in-depth applications knowledge; our products are known for their clinically-proven efficacy and their superb handling characteristics. As a market leader for more than 25 years in Canada, we conform to the highest standards of sourcing, manufacturing, labeling, and quality control. Today, we are active and growing in more than 25 countries.

PAGE # 4

BONE GRAFTS

Allografts, Xenografts & Synthetic Grafts

PAGE # 14

MEMBRANES

Allografts, Xenografts & PTFE

PAGE # 15

MATRICES

Allograft

PAGE # 18

SURGICAL ESSENTIALS

Regen accessories, Sutures, Devices
& Surgical Blades

PentOS OI™ Family. Proven to form bone. Every time. It's that simple!

PentOS OI™ Max	PentOS OI™ Putty	PentOS OI™ Flex	PentOS OI™ Sponge
ALLOGRAFT	ALLOGRAFT	ALLOGRAFT	ALLOGRAFT
PARTICULATES	DBM PUTTY	VENEER GRAFTS	BONE BLOCKS
<p>Osteoinductive Matrix not diluted by any carriers. Create your customized osteoinductive graft.</p> <p>FEATURES</p> <ul style="list-style-type: none"> • Mixed graft can be extruded through a syringe • Osteoinductive • Osteoconductive • pH balanced - non cytotoxic • Shown to form bone post-sterilization in-vivo • Resists copious irrigation <p>APPLICATIONS</p> <ul style="list-style-type: none"> • An osteoinductive base for composite graft preparation • Bone defects and sites requiring a high level of osteoinduction <p>MIXING</p> <p>May be hydrated with saline, blood, BMA, PRP, I-PRF or other biological preparations.</p> <p>AVAILABILITY</p> <p>Jars</p> <ul style="list-style-type: none"> • 1.0 cc 	<p>DBM made from 100% Human Bone without additional diluent or carrier to diminish its osteoinductive properties.</p> <p>FEATURES</p> <ul style="list-style-type: none"> • Osteoinductive • Osteoconductive • Excellent handling characteristics • Resists irrigation • Sterilized using low-dose gamma irradiation <p>APPLICATIONS</p> <ul style="list-style-type: none"> • Periodontal defects • Implant site development • Coronal defects around immediate implants • Extraction site repairs • Implant dehiscence defects • Sinus lift procedures <p>MIXING</p> <p>May be used alone or mixed with Raptos® allograft bone and/or Eclipse™ synthetic bone.</p> <p>AVAILABILITY</p> <p>Syringes</p> <ul style="list-style-type: none"> • 0.5 cc • 1.0 cc • 2.5 cc • 5.0 cc 	<p>1 mm thick osteoinductive, Demineralized Cortical Bone Graft. When hydrated the veneer graft becomes pliable and easily adapts to graft sites.</p> <p>FEATURES</p> <ul style="list-style-type: none"> • Osteoinductive demineralized • Can be fixated with screws, tacks or sutures • Freeze-dried • Sterilized using low-dose gamma irradiation • 5 years shelf life from the date of sterilization <p>APPLICATIONS</p> <ul style="list-style-type: none"> • Onlay grafting for the repair of shallow bone defects or bone loss • To augment thin or missing bone over root form implants • Orbital floor repairs <p>MIXING</p> <p>May be used alone or in combination with other graft materials.</p> <p>AVAILABILITY</p> <p>Veneer grafts</p> <ul style="list-style-type: none"> • 10x10 mm • 15x15 mm • 17x10 mm 	<p>100% Allograft Compressible Bone Matrix made of demineralized cancellous bone in block form.</p> <p>FEATURES</p> <ul style="list-style-type: none"> • Osteoinductive • Osteoconductive • Hydrates in minutes • Contours with the defect • 5 year shelf life at ambient storage <p>APPLICATIONS</p> <ul style="list-style-type: none"> • Missing laterals • Gutter defects with screw fixation <p>MIXING</p> <p>Rehydrate with saline, blood, BMA, PRP, I-PRF or other biological preparations.</p> <p>AVAILABILITY</p> <p>Blocks</p> <ul style="list-style-type: none"> • 10 mm³ • 12 mm³

BONE GRAFT OPTIONS

Choose from the industry's most complete range of dental bone grafts!

C-Graft Putty™ & C-Blast Putty™ ALLOGRAFT DBM PUTTY	Raptos® ALLOGRAFT PARTICULATES	THE Graft™ XENOGRAPH PARTICULATES
<p>Demineralized Bone Matrix (DBM) in a Carboxymethylcellulose (CMC) Carrier - natural, plant derived carrier.</p> <p>FEATURES C-Graft Putty™ & C-Blast Putty™:</p> <ul style="list-style-type: none"> • Open bore syringe • E-beam sterilization • Double sealed blister packaging <p>C-Blast Putty™ only:</p> <ul style="list-style-type: none"> • With osteoconductive cancellous particles • Osteoinductive & osteoconductive <p>APPLICATIONS</p> <ul style="list-style-type: none"> • Periodontal defects • Implant site development • Coronal defects around immediate implants • Extraction site repairs • Implant dehiscence defects • Sinus lift procedures <p>MIXING May be used alone or mixed with Raptos® allograft bone and/or Eclipse™ synthetic bone.</p> <p>AVAILABILITY Syringes</p> <ul style="list-style-type: none"> • 0.3 cc • 0.5 cc • 1.0 cc • 3.0 cc 	<p>Raptos® Allograft Mineralized Bone Grafts offer an osteoconductive platform for bone regeneration. Raptos® Demineralized Particles offer an osteoinductive boost.</p> <p>FEATURES</p> <ul style="list-style-type: none"> • Osteoconductive scaffold • Mineralized graft material • Supply a natural framework facilitating the attachment of osteogenic precursor cells • Remodels completely to host bone <p>APPLICATIONS</p> <ul style="list-style-type: none"> • Mineralized component in a composite graft • As a graft extender • Osseous defects <p>MIXING May be used alone or mixed with DBM Putty for osteoinductive potential.</p> <p>AVAILABILITY Syringes, jars & vials in a variety of sizes and bone types.</p>	<p>THE Graft™ Porous Bone Mineral Matrix gradually resorbs and is replaced with host bone during the healing process.</p> <p>FEATURES</p> <ul style="list-style-type: none"> • Highly porous cancellous structure • High interconnectivity • Minimal residual protein without the use of high temperature sintering • High level of purity • Demonstrated biocompatibility • Hydrophilic properties <p>APPLICATIONS</p> <ul style="list-style-type: none"> • Ridge augmentation • Socket preservation • Sinus lift augmentation <p>MIXING May be used alone, mixed with the patient's blood, saline or a DBM Putty.</p> <p>AVAILABILITY Syringes & vials in a variety of sizes.</p>

BONE GRAFT OPTIONS

Choose from the industry's most complete range of dental bone grafts!

CevOss™	PreservaRidge™ Plug	Eclipse™
XENOGRAFT	SYNTHETIC	SYNTHETIC
PARTICULATES	PLUG	PARTICULATES & PUTTY
<p>Bone Matrix Implant made of deproteinized bovine bone and indicated in bone regeneration.</p> <p>FEATURES</p> <ul style="list-style-type: none"> • High volume of interconnected pores promotes new bone formation and growth • Promotes osteoblasts bonding and posterior osteoid formation • Promotes osteogenesis, thanks to its osteoconductive property • No potential immunological or infectious risks • Adheres to instrumentation • Adapts to the cavity shape <p>APPLICATIONS</p> <ul style="list-style-type: none"> • Bone defects • Bone augmentation • Alveolar ridge augmentation/reconstruction • Socket filling • Ridge preservation • Implantology: implant site preparation, bone defect filling and maxillary sinus lift • Periodontology: bone defect filling, membrane support during guided tissue regeneration <p>AVAILABILITY</p> <p>Vials</p> <ul style="list-style-type: none"> • 250-1000 µm: 0.5 cc (0.25 g), 1.0 cc (0.5 g), 2.0 cc (1.0 g), 5.0 cc (2.5 g) & 8.0 cc (4.0 g) • 1000-2000 µm: 0.5 cc (0.18 g), 1.0 cc (0.35 g), 2.0 cc (0.7 g), 5.0 cc (1.7 g) & 8.0 cc (2.9 g) 	<p>Bone Graft Composite Plug. PreservaRidge™ Plug is a synthetic plug that mimics natural bone and is made of approximately 80 % mineral particles combined with 20 % Type I collagen from bovine Achilles tendon.</p> <p>FEATURES</p> <ul style="list-style-type: none"> • Easy to use - Takes the shape of defect when hydrated to fill socket • Mineral particles are contained within the defect site • Twice the mineral compared to the competition and just as absorbent • Lower crystallinity than HA enables optimal turnover • Provides vital minerals for remodeling • Resorbs completely between 9-12 months • Median pore size in mineral is 120 µm - open like cancellous bone • Allows for more blood to be absorbed • Space for cells to propagate and remodel <p>APPLICATIONS</p> <ul style="list-style-type: none"> • Ridge/Socket Preservation <p>AVAILABILITY</p> <ul style="list-style-type: none"> • 10 x 20 mm • 6 x 25 mm 	<p>Resorbable Bone Substitute Granules. Using the mineral building blocks naturally found in human bone, Eclipse™ goes a step beyond the realm of everyday hydroxyapatite and tricalcium phosphate with its unique combination of micro and macroporosity technology.</p> <p>FEATURES</p> <ul style="list-style-type: none"> • Macro and Micro pores allow complete remodeling • Completely remodels to host bone while preserving volume <p>APPLICATIONS</p> <ul style="list-style-type: none"> • Ridge preservation • Extraction site repairs • Sinus lift procedures • Ridge augmentation • Osseous defects • Periodontal defects <p>MIXING</p> <p>May be used alone or mixed with DBM Putty for osteoinductive potential.</p> <p>AVAILABILITY</p> <p>Granules available in syringes & vials in a variety of sizes. Putty available in syringes.</p>

ALLOGRAFTS



PentOS OI™ FAMILY

100% Allograft. Proven to form bone. Every time. It's that simple!

Post sterilization in-vivo testing on each lot must demonstrate the presence of new bone, bone marrow, osteocytes, cartilage and chondrocytes within 28 days in an athymic rat model otherwise we don't call it PentOS OI™. In-vitro tests of PentOS OI™ have demonstrated native levels of BMP-2 up to 19 times the native levels in the control.



PentOS OI™ Max

Hydratable Inductive Matrix

Osteoinductive matrix not diluted by any carriers. Create your customized osteoinductive graft. pH balanced – non cytotoxic and resists copious irrigation.

Jars (*P-MAX010*) 1.0 cc

PentOS OI™ Putty

DBM Putty

Made from 100% human bone without additional diluent or carrier to diminish its osteoinductive properties. Sterilized using low-dose gamma irradiation.

Syringes (*P-PUTTYS005*) 0.5 cc, (*P-PUTTYS010*) 1.0 cc, (*P-PUTTYS025*) 2.5 cc & (*P-PUTTYS050*) 5.0 cc

PentOS OI™ Flex

Flexible Veneer Graft

1 mm thick osteoinductive, demineralized 100% cortical bone veneer graft. When hydrated, it becomes pliable and it easily adapts to graft sites.

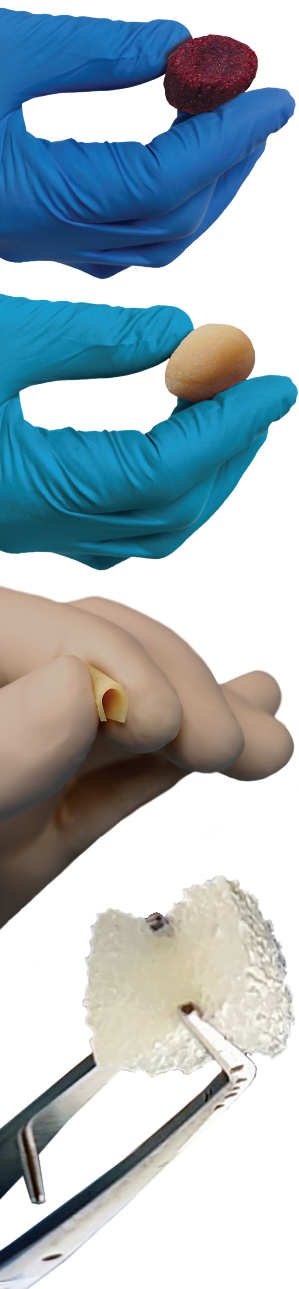
(*P-FLEX1010*) 10x10 mm, (*P-FLEX1515*) 15x15 mm & (*P-FLEX1710*) 17x10 mm

PentOS OI™ Sponge

Compressible Bone Matrix

Osteoinductive & Osteoconductive bone matrix made of cancellous and demineralized bone. Hydrates in minutes and contours with the defect.

Bone blocks (*P-SP-B10*) 10 mm³ & (*P-SP-B12*) 12 mm³



ALLOGRAFTS

DBM PUTTIES



C-Graft Putty™

Demineralized Bone Matrix (DBM) in CMC

DBM in CMC – a natural, plant derived, carrier for superior handling.

Syringes (CG-P03) 0.3 cc, (CG-P05) 0.5 cc, (CG-P10) 1.0 cc & (CG-P30) 3.0 cc



C-Blast Putty™

DBM in CMC with Cancellous Particules

Composite graft product that combines osteoinductive DBM and osteoconductive cancellous particles in CMC.

Syringes (CB-P03) 0.3 cc, (CB-P05) 0.5 cc, (CB-P10) 1.0 cc & (CB-P30) 3.0 cc



RAPTOS® BONE BLOCKS

A Natural Scaffold for Bone Regeneration!

Raptos® Cortico-Cancellous bone blocks are instrumental in bone volume regeneration for severe bone atrophy cases that require an increase in initial stability for an implant site. Our cortico-cancellous blocks and wedge combine the stability of a cortical surface with the porosity of a cancellous surface for osteointegration.



Wedge 7x7x10 mm
(CCBB-07)



Block 6x6x10 mm
(CCBB-06)

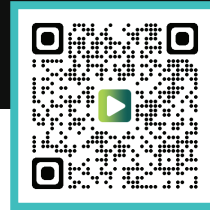


Block 6x12x12 mm
(CCBB-12)



Block 6x12x20 mm
(CCBB-20)

ALLOGRAFTS



RAPTOS® GRANULES

A Natural Scaffold for Bone Regeneration!

Raptos® Allograft mineralized bone grafts offer an osteoconductive platform for bone regeneration and Raptos® demineralized particles offer an osteoinductive component. Used either alone or as part of a composite bone graft, allograft bone particulates supply a natural framework facilitating the attachment of osteogenic precursor cells.

Premium Blend - This Cortical Mineralized/Demineralized blend combines two of the most popular allograft particles used in dentistry.



RAPTOS® JARS

		0.25 cc	0.5 cc	1.0 cc	2.0 cc	5.0 cc
Cortical	250-1000 µm		COR02J-05	COR02J-10	COR02J-20	
Cancellous	250-1000 µm		CAN02J-05	CAN02J-10	CAN02J-20	CAN02J-50
Cortico-Cancellous	250-1000 µm	CCB02J-02	CCB02J-05	CCB02J-10	CCB02J-20	CCB02J-50

RAPTOS® VIALS

		0.25 cc	0.5 cc	1.0 cc	2.0 cc	5.0 cc
Cortical	125-850 µm		COR01-05	COR01-10	COR01-20	
Cancellous	250-1000 µm		CAN02-05	CAN02-10	CAN02-20	CAN02-50
Cortico-Cancellous	250-1000 µm	CCB02-02	CCB02-05	CCB02-10	CCB02-20	CCB02-50
Demin. Cortical	125-850 µm		DCB01-05	DCB01-10		
Premium Blend - Cortical Mineralized/Demineralized	250-1000 µm		DMC02-05	DMC02-10	DMC02-20	

RAPTOS® SYRINGES

		0.25 cc	0.5 cc	1.0 cc
Cortical	200-850 µm	COR02S-02	COR02S-05	COR02S-10
Cancellous	200-850 µm	CAN02S-02	CAN02S-05	CAN02S-10
Cortico-Cancellous	200-850 µm	CCB02S-02	CCB02S-05	CCB02S-10
	850-1500 µm			CCB08S-10
Demin. Cortical	200-850 µm	DCB02S-02	DCB02S-05	DCB02S-10
Premium Blend - Cortical Mineralized/Demineralized	200-850 µm	DMC02S-02	DMC02S-05	DMC02S-10



XENOGRAFTS



THE GRAFT™

Porous Bone Mineral Matrix

THE Graft™ is designed to mimic the structure of human bone, offering osteoconductive properties to host cell growth and complete remodeling to host bone. The natural structure of the anorganic bone mineral of THE Graft™ demonstrates similar physical and chemical characteristics compared to the mineralized matrix of human bone. THE Graft™ gradually resorbs and is replaced with host bone during the healing process. THE Graft™ is cancellous granules and is sterilized using gamma irradiation.

1. HIGHLY POROUS STRUCTURE WITH HIGH INTERCONNECTIVITY.

Supports absorption of liquids such as blood and leads to incorporation and remodeling.

2. MINIMAL RESIDUAL PROTEIN WITHOUT THE USE OF HIGH TEMPERATURE SINTERING.

The natural interconnectivity is maintained. THE Graft is structurally similar to human bone.

3. HIGH LEVEL OF PURITY.

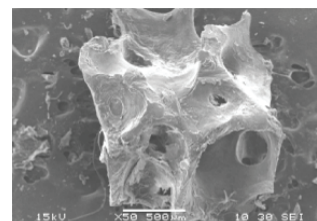
Predictable bone growth with little immunogenic reaction.

4. DEMONSTRATED BIOCOMPATIBILITY.

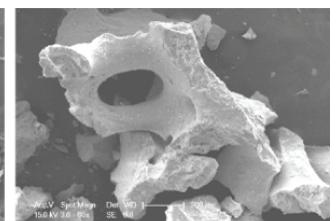
Encourages cell adhesion and supports vital cell growth.

5. THE GRAFT™ HYDROPHILIC PROPERTIES.

This high wettability positions this material to have advantages in host fluid absorption.



Human bone



THE Graft™

Volume (cc)		0.5 cc		1.0 cc	
Syringes	250-1000 µm	TG-AS05		TG-AS10	
Weight (grams)		0.25 g	0.5 g	1.0 g	2.0 g
Volume (cc)		0.6 cc	1.2 cc	2.4 cc	4.8 cc
Vials	250-1000 µm	BG-A25	BG-A05	BG-A10	BG-A20

XENOGRAFTS



CEVOSS™

Bovine Bone particulates

CevOss™ bone matrix implant is made of deproteinized bovine bone and is indicated in bone regeneration. Thanks to its natural origin, it is chemically and structurally comparable to mineralized cancellous human bone (natural nanocrystalline apatite). The highly purified osteoconductive mineral structure is obtained from natural bovine bone through a manufacturing process that guarantees a 96% phase purity in strict compliance with international standards. CevOss™ is sterilized with gamma-radiation at 25kGy.

Features & Benefits

- The high volume of interconnected pores promotes new bone formation and growth
- Promotes osteoblasts bonding and posterior osteoid formation
- Promotes osteogenesis, thanks to its osteoconductive property
- No potential immunological or infectious risks
- Adheres to instrumentation
- Adapts to the cavity shape



Applications

- Implantology: implant site preparation, bone defect filling and maxillary sinus lift
- Periodontology: bone defect filling, membrane support during guided tissue regeneration
- Socket filling post-extraction - ridge preservation
- Bone defects and bone augmentation in general
- Alveolar ridge augmentation/reconstruction



Volume (cc)		0.5 cc	1.0 cc	2.0 cc	5.0 cc	8.0 cc
Weight (grams)		0.25 g	0.5 g	1.0 g	2.5 g	4.0 g
Vials	250-1000 µm	CEV02-05	CEV02-10	CEV02-20	CEV02-50	CEV02-80

Volume (cc)		0.5 cc	1.0 cc	2.0 cc	5.0 cc	8.0 cc
Weight (grams)		0.18 g	0.35 g	0.7 g	1.7 g	2.9 g
Vials	1000-2000 µm	CEV10-05	CEV10-10	CEV10-20	CEV10-50	CEV10-80

SYNTHETIC GRAFTS

PRESERVARIDGE™ PLUG

Ridge Preservation Simplified!

PreservaRidge™ Plug is a synthetic plug that mimics natural bone and is made of approximately 80% mineral particles combined with 20% Type I collagen from bovine Achilles tendon. It is specifically designed for use in post extraction treatment to help maintain ridge height and width.

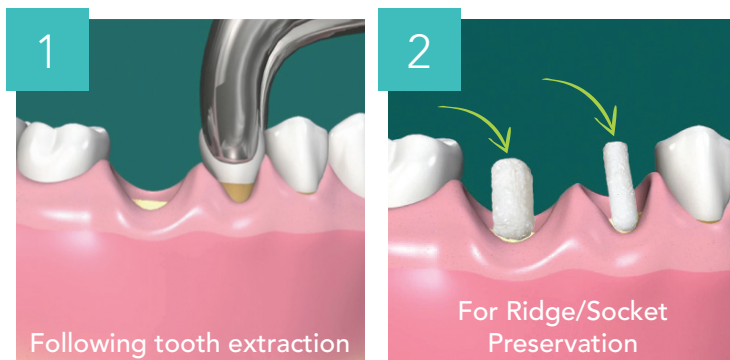
PreservaRidge™ Plug is shaped like the extraction socket and is easily placed to fill the void left by the removal of the tooth root. Its porous structure, mineral content and collagen matrix makes it an ideal environment for healing and bone growth in preparation for subsequent prosthetic treatments.

Features & Benefits

- Easy to use
 - Takes the shape of defect when hydrated to fill socket
 - Mineral particles are contained within the defect site
 - More mineral and just as absorbent
 - 80% mineral content - twice the mineral compared to the competition
 - Lower crystallinity than HA enables optimal turnover
 - Provides vital minerals for remodeling
 - Resorbs completely between 9-12 months
- Median pore size in mineral is 120 µm - open like cancellous bone
- Allows for more blood to be absorbed
 - Space for cells to propagate and remodel

Applications

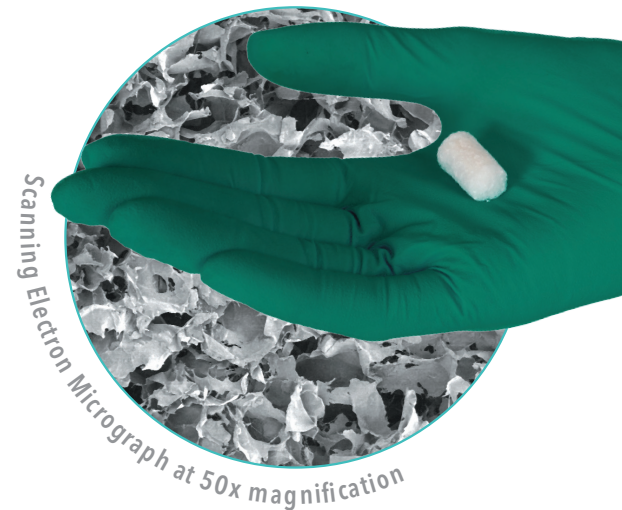
- Ridge/Socket Preservation



Availability

PreservaRidge™ Plug comes in 2 sizes (posterior/anterior) in boxes of 5.

10 x 20 mm (PRPREG)
& 6 x 25 mm (PRPSLM)



SYNTHETIC GRAFTS



ECLIPSE™ FAMILY

Completely transforms to Natural Bone!

Using the mineral building blocks naturally found in human bone, Eclipse™ goes a step beyond the realm of everyday hydroxyapatite (HA) and tricalcium phosphate (TCP) with its unique combination of micro and macroporosity technology. The Eclipse™ key to balanced bone regeneration is its unique ratio between micro and macro porosity and its unique ratio between HA and β -TCP.

		0.25 cc	0.5 cc	1.0 cc	2.0 cc
Syringes	Putty		E1P005	E1P010	
	500-1000 μ m Granules		E1GS005	E1SG010	
Vials	500-1000 μ m Granules	E1G002	E1G005	E1G010	
	1000-2000 μ m Granules				E2G020

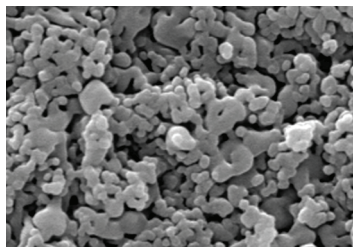


Eclipse™ Granules

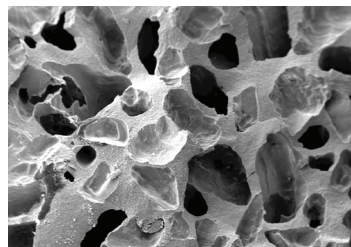
Synthetic Resorbable Bone Substitute

A 100% synthetic (20% HA, 80% TCP), cost-effective bone graft matrix used as an alternative to biologic osteoinductive products.

70% OVERALL POROSITY



1/3 microporosity



2/3 macroporosity

Eclipse™ putty

Injectable Synthetic Bone Substitute

Innovative and moldable bone graft, composed of HA, β -TCP and a hydrogel. By combining the complete interconnectivity of Eclipse™ granules with a carrier, the handling properties are greatly enhanced. 40 - 45% Hydrogel (highly diluted HPMC).

Membranes

Neomem®	Neomem® FlexPlus	Neomem® Xac
XENOGRAFT	XENOGRAFT	ALLOGRAFT
RESORBABLE 26-38 WEEKS	RESORBABLE 3-4 MONTHS	RESORBABLE 8-12 WEEKS
<p>Bovine Collagen Membrane. Neomem® membrane is a Type 1 bovine collagen matrix indicated for use in guided tissue procedures to enhance wound healing.</p> <p>FEATURES</p> <ul style="list-style-type: none"> • Higher mechanical strength for membrane stabilization in situ using either sutures or resorbable tacks • Longer in vivo stability and resorption time, for sustained function • Optimized flexibility and rigidity for better space maintenance, which allows for desired tissue in-growth <p>APPLICATIONS</p> <ul style="list-style-type: none"> • GTR • GBR <p>USE</p> <ul style="list-style-type: none"> • Either side of the Neomem® can be placed towards the soft tissue or bone • Easily trimmed and placed, wet or dry <p>AVAILABILITY</p> <ul style="list-style-type: none"> • 15 x 20 mm • 20 x 30 mm • 30 x 40 mm 	<p>Porcine Collagen Membrane. Neomem® FlexPlus is a single layer collagen membrane derived from porcine peritoneum.</p> <p>FEATURES</p> <ul style="list-style-type: none"> • High suture pull out strength • Excellent draping • Lower inflammation • Easy handling <p>APPLICATIONS</p> <ul style="list-style-type: none"> • GTR • GBR <p>AVAILABILITY</p> <ul style="list-style-type: none"> • 15 x 20 mm • 20 x 30 mm • 30 x 40 mm 	<p>Amnion-chorion membrane composed of an amnion layer and a chorion layer and together they provide a protective barrier that makes it ideal for multiple dental applications.</p> <p>FEATURES</p> <ul style="list-style-type: none"> • Minimally invasive • No trimming necessary • May be placed up or down • No fixation or pre-hydration necessary • Can be left exposed <p>APPLICATIONS</p> <ul style="list-style-type: none"> • Socket Preservation • GTR • GBR • Dental Implants • Sinus Augmentation • Ridge Augmentation • Endodontic Applications <p>AVAILABILITY</p> <ul style="list-style-type: none"> • 8 x 8 mm • 10 x 20 mm • 12 x 12 mm • 15 x 20 mm • 15 x 25 mm • 20 x 30 mm

MEMBRANE & MATRIX OPTIONS

Membranes

Matrices

OpenTex®

PTFE

NON-RESORBABLE

Non-resorbable PTFE Membrane.

FEATURES

- 100% Medical Grade PTFE
- Non-resorbable
- Withstands exposure
- Biocompatible

APPLICATIONS

- GTR
- GBR

USE

- Easily trimmed to desired shape

AVAILABILITY

(Box of 5 membranes)

- 24 x 30 mm
- 17 x 25 mm

Neoderm™ ADM

ALLOGRAFT

**RESORBABLE
3-4 MONTHS**

Acellular Human Dermis Membrane. Natural elasticity of human skin. Thickness of 0.9-1.6 mm.

FEATURES

- Minimally processed
- Freeze-dried and sterilized
- 2 years of shelf life at room temperature

APPLICATIONS

- Replacement of damaged or inadequate tissue
- Repair, reinforcement or supplemental support of soft tissue defects

USE

- Easily trimmed to desired shape
- Can be shaped with scissors or a scalpel

AVAILABILITY

(0.9 - 1.6 mm thickness)

- 10x10 mm
- 20x10 mm
- 10x40 mm
- 20x40 mm

MEMBRANES



Neomem®

Bovine Collagen Membrane

Resorbable

26-38 weeks

Highly purified type I collagen fibres derived from bovine Achilles tendon. The macromolecular pore size allows vital nutrient transfer while the cell occlusive membrane retards epithelium down growth.

(N1520) 15x20 mm, (N2030) 20x30 mm & (N3040) 30x40 mm

Neomem® FlexPlus

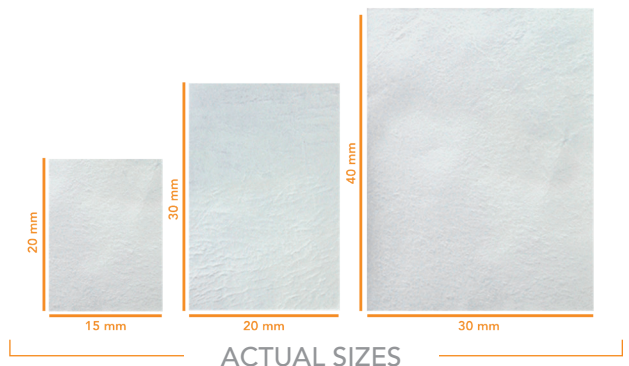
Porcine Collagen Membrane

Resorbable

3-4 months

Single layer collagen membrane derived from porcine peritoneum. It hydrates quickly and it's handling characteristics make surgical placement easy.

(NF1520) 15x20 mm, (NF2030) 20x30 mm & (NF3040) 30x40 mm



Neomem® Xac

Amnion-chorion membrane

Resorbable

8-12 weeks

Disinfected, cleaned, dehydrated and sterilized after recovery from cesarean section procedures. Composed of an amnion layer and a chorion layer. Together they provide a protective barrier that makes it ideal for multiple dental applications.

(NAC0808) 8x8 mm, (NAC1020) 10x20 mm, (NAC1212) 12x12 mm, (NAC1520) 15x20 mm, (NAC1525) 15x25 mm & (NAC2030) 20x30 mm



MEMBRANES

**NEW
PRODUCT**



Non-Resorbable



OpenTex®

100% PTFE Membrane

Non-resorbable, withstands exposure, easily trimmed to desired shape & biocompatible.

(*OPENTEX_0105*) 24 x 30 mm & (*OPENTEX_0205*) 17 x 25 mm



Non-Resorbable

- 100% medical grade PTFE membrane
- Biologically inert and chemically non-reactive



Microporous

- Promotes gingival tissue attachment
- Enhances trans barrier interstitial fluid circulation
- Resists penetration of foreign substances and fibroblast cells migration



Minimally Invasive

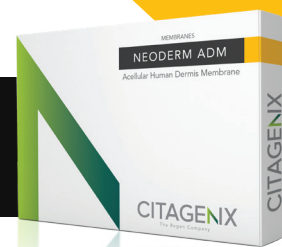
- Rapid recovery of soft tissue
- Primary closure is not necessary
- Minimal flap reflection or dissection



Withstands Exposure

- Protects the tissue regeneration materials
- Provides an environment designed to enhance the growth of blood vessel and osteogenic cells

MATRICES



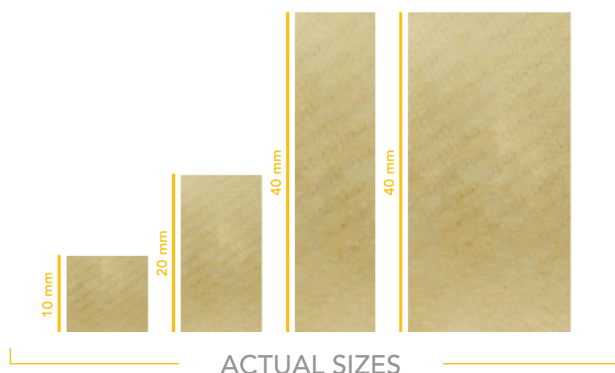
Resorbable

3-4 months

Neoderm™ ADM

Acellular Human Dermis Membrane

These human derived dermal grafts are decellularized to remove cellular components and preserve the biological properties that promote revascularization and repair. 0.9-1.6mm thickness. (*ADM1010-T*) 10x10mm, (*ADM2010-T*) 10x20mm, (*ADM4010-T*) 10x40mm & (*ADM4020-T*) 20x40mm



SUTURES

Non-Resorbable



BIOTEX™

PTFE (PFOA Free) Suture | Minimal memory, No tangle and Superior handling

Biotex™ Non-Resorbable PTFE Suture is comprised of a single-arm, non-resorbable monofilament suture with a stainless-steel surgical needle connected to the suture. The suture is uncoated, undyed and sterile for single use only, composed of 100% PTFE.



1. Slim reverse cutting needle tip

- Precision slim cut triangular needle for small penetration area and smooth suturing.

2. Strong Attachment

- Advanced technology for strong needle attachment.
- Smooth and firm connection between needle and thread.
- Rapid healing process due to the reduced bleeding from needle insertion.

3. Strong Needle

- 33% higher strengths are required to bend the needle in the same degree compared to other products.
- No worry of a bent needle during suturing due to its rigidity.

4. Suture High pliability (PTFE)

- Easier tying and knotting with less unintended loosening.

Code	USP Size	Suture Length	Needle Length	Circle	Point type
BT3016	3-0	45 cm	16 mm	3/8	▽
BT3019	3-0	45 cm	19 mm	3/8	▽
BT4013	4-0	45 cm	13 mm	3/8	▽
BT4016	4-0	45 cm	16 mm	3/8	▽
BT4019	4-0	45 cm	19 mm	3/8	▽
BT5013	5-0	45 cm	13 mm	3/8	▽
BT5016	5-0	45 cm	16 mm	3/8	▽
BTP4013	4-0	45 cm	13 mm	1/2	⊙



1 Needle holding clip

Designed to hold the needle in place, also allows for secure and easy release of the suture needle from its package.

2 Tab

Allows surgeon to easily grasp and remove the suture needle from its needle holder clip.

3 "Race Track" shape

Designed to prevent suture from entangling, and allows easy release of the suture.

4 Sturdy & Flexible Transparent Cover

Protects and gives clear visibility of the suture and needle. Soft and sturdy cover effectively protect the suture.

SUTURES

Resorbable

MONOGLYC™

Absorbable Dyed Monofilament suture

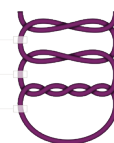
The smooth monofilament surface structures of the Monoglyc™ polymer result in excellent handling and tissue passage properties. Tissue trauma from suturing is virtually non-existent with Monoglyc™, and the monofilament structure prevents bacterial wicking. Monoglyc™'s high quality needle easily allows for atraumatic passage through tissue.

- Stretchy • Enough time to achieve periosteum reattachment • Stable knots • High tear resistance
- Reliable knot security • Maintain 50% tensile strength for 14-28 days • Very supple • Atraumatic tissue passage • Optimal tissue compatibility • No need to be removed • No plaque build up
- Absorbable in approximately 4 weeks (5/0) • Decreased risk of dehiscence

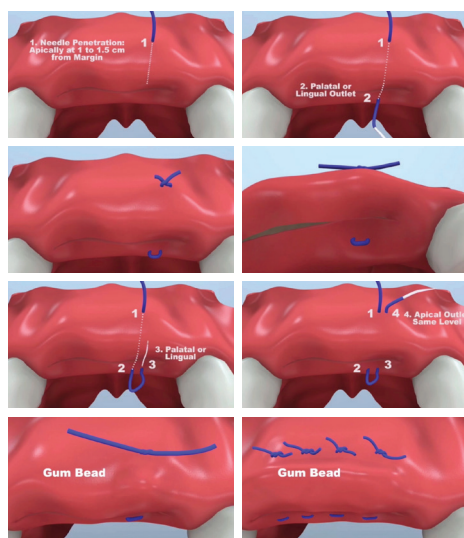
Ideal suture for the Apical Mattress Technique – A new suture and suturing technique that will help you Remove tension & mobility of the buccal flap.

- Helps remove tension & mobility of the buccal flap – Decreases soft tissue ischemia – Promotes faster healing & increased soft tissue thickness – Greatly decreases the risk of dehiscence • Faster revascularization of the cortical bone • Faster revascularization of the grafted bone • Prevention of the native bone resorption • Prevention of the bone graft resorption

KNOT
MUST BE FLAT



SURGICAL TIP: Monofilament should be cut long (min. 8 mm) otherwise, the threads are hurtful. Shorter threads are stiffer and cause tissue irritation.



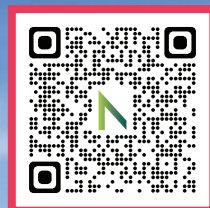
Code	USP Size	Suture Length	Needle Length	Circle	Point type	Similar Needle Codes
JCG65120	4/0	45 cm	18 mm	3/8	DS18 ▽	Reverse cutting C6, FS-2 & C-13
JCG65116	4/0	70 cm	18 mm	3/8	DS18 ▽	Reverse cutting C6, FS-2 & C-13
JCG65121	5/0	45 cm	18 mm	3/8	DS18 ▽	Reverse cutting C6, FS-2 & C-13
JCG65109	5/0	45 cm	16 mm	3/8	DSM16 ▽	Premium-cut PC34, PS-3 & p-11
JCG65122	5/0	70 cm	18 mm	3/8	DS18 ▽	Reverse cutting C6, FS-2 & C-13
JCG65127	6/0	45 cm	13 mm	3/8	DSM13 ▽	Premium-cut C3, P-3 & P-13

**NEW
PRODUCT**

PENGUIN'S INSTRUMENTS & ACCESSORIES

Clinical Benefits Include:

- Gives dentists the ability to reliably monitor the osseointegration of dental implants
- Removes doubt when determining safe loading times
- Reduces risk of implant failure and helps contribute to better outcomes
- Works with all major implant systems
- Affordable and uncomplicated



NEW GENERATION

PENGUIN II

Introducing the New Generation!

The new Penguin II is the next-generation dental implant stability monitor for monitoring osseointegration of dental implants using the clinically-proven ISQ Scale. It provides accurate, reliable measurement of dental implant stability. Penguin II is an excellent choice for any dentist placing or restoring dental implants.

The Penguin II is a highly sophisticated Resonance Frequency Analysis (RFA) instrument that measures implant stability and osseointegration to enhance decisions about when to load. In addition to a sleeker look and more premium feel, than its predecessor, the Penguin II now features a replaceable battery – significantly extending the product's useful lifespan. The Penguin II has an updated aesthetic with important clinical purpose. New flatter sides bring increased comfort, surer grip, and better leverage when in the hand. A new LED display screen improves readability. The Penguin II utilizes cost-effective MultiTiegs, which are available for all major implant systems and are autoclavable for up to 20 uses.



PENGUIN'S INSTRUMENTS & ACCESSORIES



PENGUIN RFA

The Penguin RFA is an Innovative device that helps dentists reliably and affordably Measure and Monitor implant stability.

The Penguin RFA uses Resonance Frequency Analysis (RFA) to predictably measure implant stability providing dentists with an Implant Stability Quotient value (ISQ) to support the decision of when to restore the implant. Just mount the MultiPeg™, aim for the top and the ISQ value will be displayed in less than a second. Values above 70 means high stability and are typically used for one-stage and immediate loading. (55002)



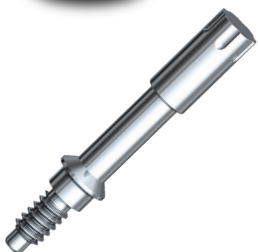
Reusable

MULTIPEGs & ACCESSORIES



ISQ Tester

Test Block with an interval of ISQ (45-55), enabling clinicians to test their instrument. (55217)



MultiPeg™

Reusable MultiPegs for the Penguin RFA

Available for different implant systems. Durable, tissue-friendly & autoclavable.



MultiPeg™ Driver

Driver for your Reusable MultiPegs™. (55003)

WOUND DRESSINGS



NEOPLUG™, NEOCOTE™ & NEOTAPE™

Xenograft - Porous Collagen Matrices

Our resorbable dental wound dressings are absorbent and porous collagen matrices engineered from purified collagen that is derived from bovine dermis tissue.

- Can be shaped and cut to size
- Individually packed in boxes of 5 units
- Single use and supplied sterile



NeoPlug™

Resorbable

Cylindrical shape that easily adapts to surgical sites.

- Extraction sites
- Traumatic wounds
- Surgical wounds

(NEOPLUG) 10x20 mm



NeoCote™

Resorbable

Thick sponge shape that protects soft tissue.

- Periodontal surgical wounds
- Oral ulcers (non-infected or viral)
- Denture sores

(NEOCOTE) 20x40x3 mm



NeoTape™

Resorbable

Thin tape like design for more intricate uses.

- Palatal donor site
- Suture sites
- Burns

(NEOTAPE) 25x75x1 mm



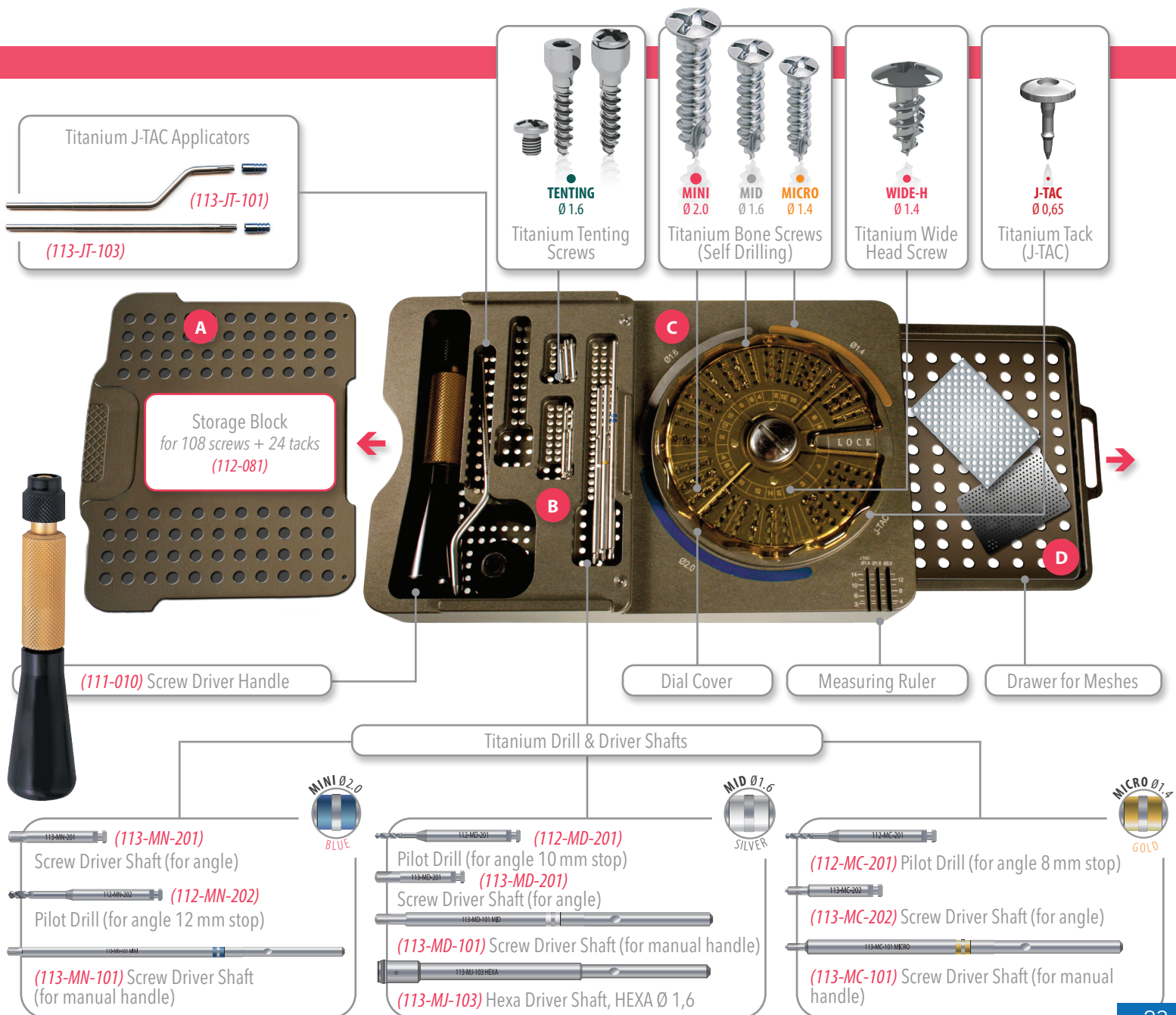
BONE & MEMBRANE FIXATION

SCREW & TACK KIT

Designed for Easy Access!



The Citagenix Screw & Tack Kit is designed to organize all you need for bone and membrane fixation in one convenient location. The storage block consists of a sliding cover (A) that locks into place the compartmental instrumentation section (B), a dial cover that keeps the screws and tacks into place including a measuring ruler (C) and a conveniently located drawer (D) for titanium meshes. The convenient color coding | • blue • silver • gold | of the dial area matches that of the instrumentation driver shafts making it easier to get it right the first time.





CITAGENIX

1 877-243-6724
+1 450-688-2564

info@citagenix.com
Citagenix.com



As Regen Experts, we are happy to share our knowledge, so please feel free to send us any questions you may have, we're here to help!

Citagenix.com/support

