



# Empower your electrification journey

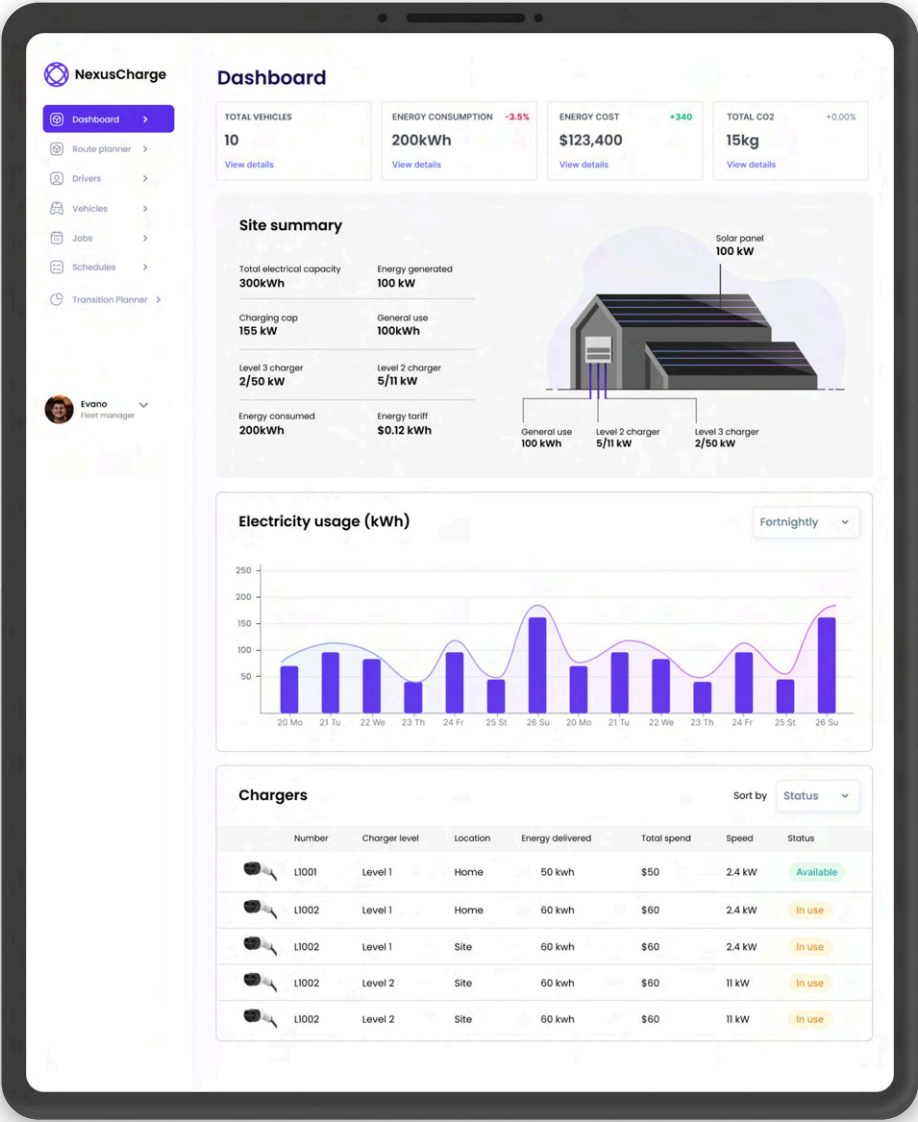
Confidence is the most powerful energy in the EV transition, and we supercharge you with it.

# EV Transition Planner

## Transforming with our EV transition planner and management ZEV

Introducing the EV Transition Planner, a game-changing end-to-end solution that not only answers the urgent call for a more sustainable yet cost-effective transport industry but also redefines your fleet electrification. Our solution provides the forecast of your operations.

Powered by advanced technologies and data-driven insights, our solution doesn't just empower fleet managers, it propels them to make informed decisions and accelerate the shift towards electric vehicles.



### Our promise

Powered by advanced technologies and data-driven insights, our solution empowers you accelerate the shift towards electric vehicles.



# Benefits of EV transition Planner


Using EV transition planner will help you:

- ✓ Assess, plan, and develop electrification strategies.
- ✓ Understand CAPEX, CO2 emissions, ROI and charging times required for your operations.
- ✓ Visualise a detailed TCO of your e-fleet.
- ✓ Create a mixed strategy of EV, ICE and hybrid.
- ✓ Leverage our AI system to forecast future fuel savings and energy requirements for your e-fleet.
- ✓ Access tailored information about Electric Vehicles suitable for your operations.
- ✓ Identify what vehicles, range, charging patterns and battery technology suit your operations.
- ✓ Design multiple scenarios to adjust your environmental goals.
- ✓ Access the latest EV information and technologies tailored to fleet requirements.
- ✓ Boost driver acceptance and stakeholder engagement.
- ✓ Tailor training to your workforce.

## ICE/EV conversion list

I plan to keep the vehicle for **10 years** ▾

ICE vehicle

  
Ford Transit Passenger Van XL

Purchase cost

\$50,000

10 year cost

\$150,000


\$15,000

yearly ▾

\$0.18

per mile ▾

Replaced EV

  
Peugeot Boxer Van

Purchase cost

\$50,000

10 year cost

\$90,000

\$9,000

\$0.04

NexusCharge

Dashboard >

Route planner >

Drivers >

Vehicles >

Jobs >

Schedules >

Transition Planner >

Evano

Fleet manager ▾

Your electrification plan

← Back

ICE fleet analysis

Proposed EVs

Comparison

Scenario b

Transition to EV fleet could save you

\$200,000

over the course of 5 years ▾

Estimated annual savings breakdown

	ICE Fleet	EV Fleet
Number of vehicles	100 <a href="#">View details</a>	100 <a href="#">View</a>
Annual fuel cost	\$190,510	\$50,000

# NexusCharge—Optimising Fleet Management

With the successful implementation of the EV Transition Planner, NexusCharge represents the next evolution in fleet management.

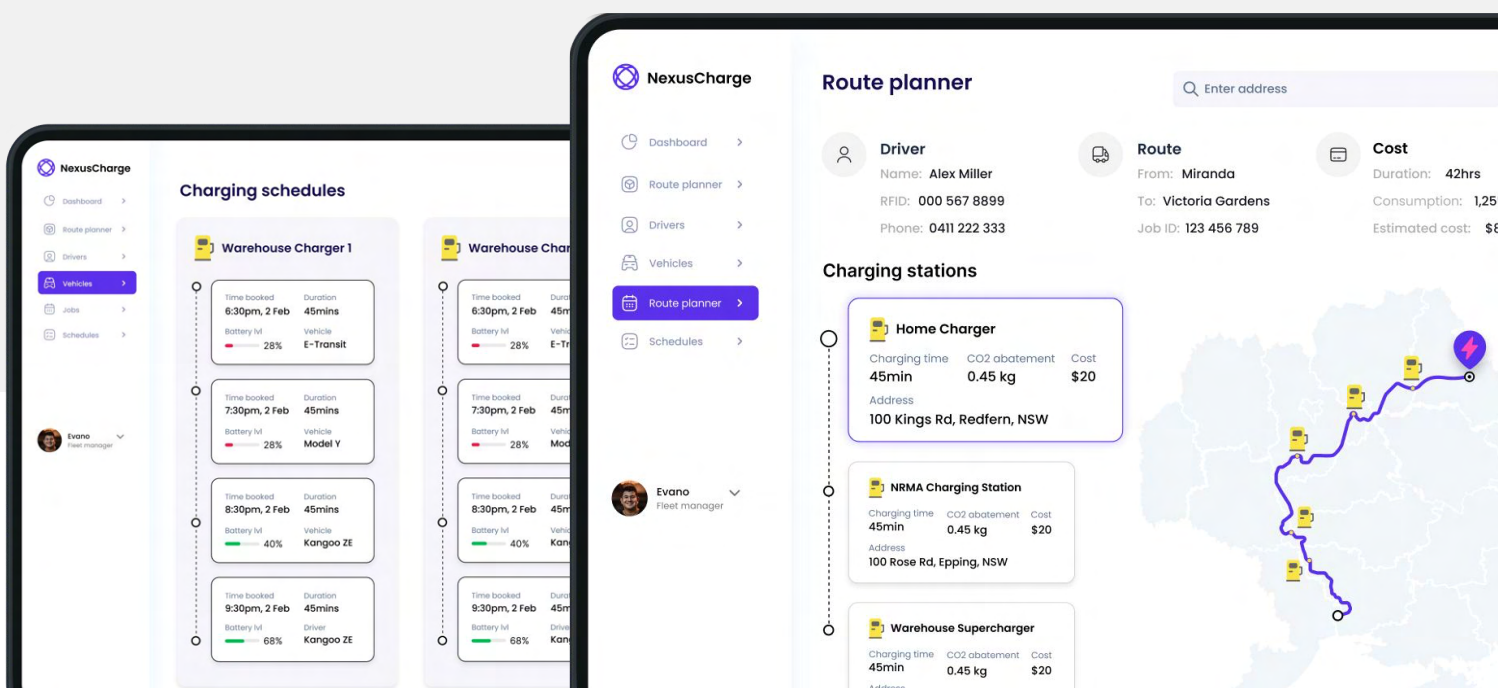
**Be connected:** Establish seamless connectivity with over 40 OEM vehicles, eliminating complex hardware installation and providing unparalleled insights into fleet operations, increasing compliance and safety while being on top of maintenance.

**Be anywhere:** We ensure your vehicle is always powered. Our AI charging schedules forecast your daily operations and energy demand patterns to minimise charging costs, maximise fleet efficiency, and align with renewable energy sources.

**Be confident:** Our systems optimise your routes based on each vehicle's capability, design efficient rules, and plan charging stops using the vehicle's energy profile to eliminate downtime.

**Be flexible:** Scale charging infrastructure without significant upfront costs, with flexibility for depot, home, and public charging options.

**Be 100% Sustainable:** Access the intelligent technology that powers your fleet on renewable energy by accessing partner energy deals and smart charging with grid integration, reducing fuel costs by around 60%.

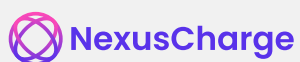
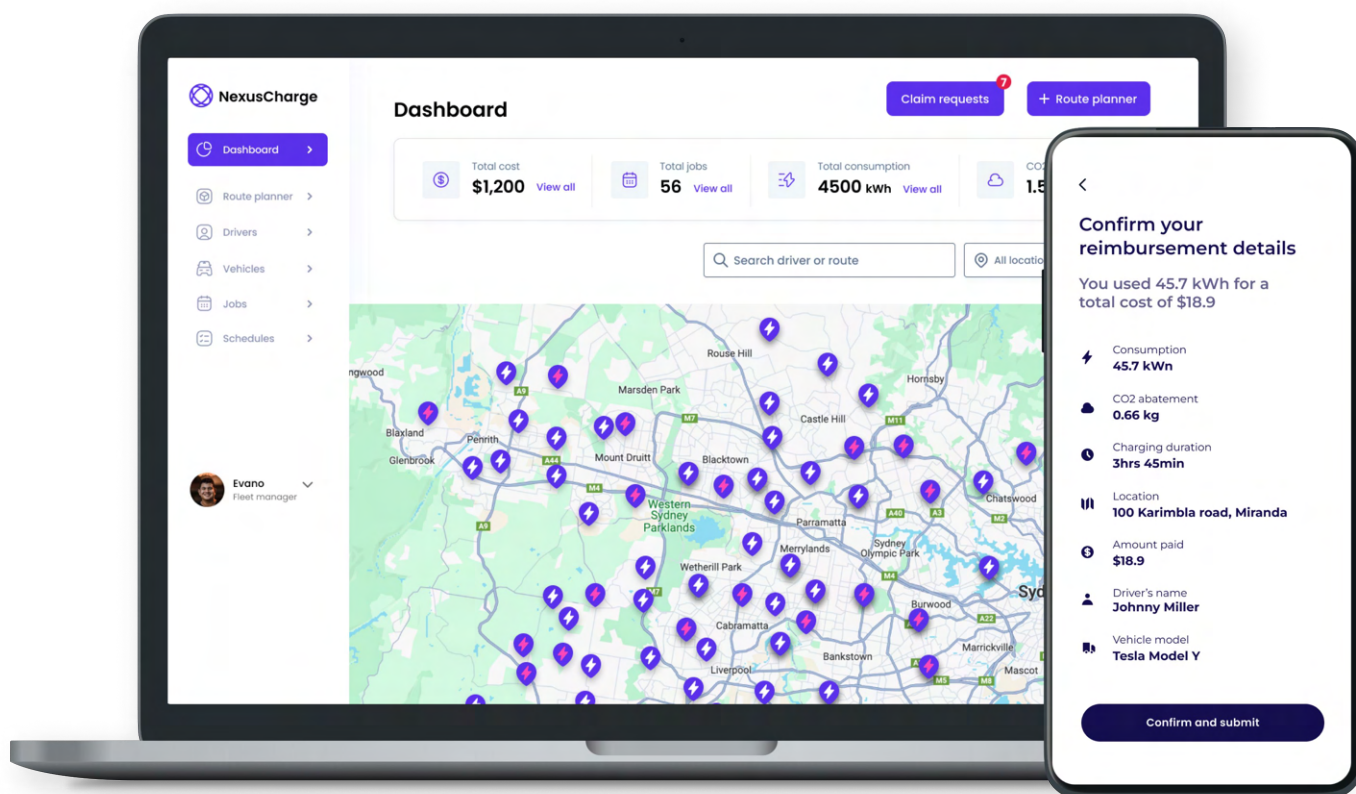


## Easy Reimbursement Process

Streamline charging reimbursement with secure, swift, and simplified workflows through drivers' mobile apps.

## Price breakdown

Choose from our Basic or Advanced Plans, tailored to your organisation's size and requirements. Benefit from expert consultation services for personalised solutions.



Join us in leading the charge towards a sustainable and intelligent future.

**Contact us today to learn how we can transform your fleet operations.**

**Alex Carvajal**

[Alexc@beyonddev.com.au](mailto:Alexc@beyonddev.com.au)

0451 668 400

245 St Kilda Road, St Kilda VIC 3182, Melbourne Australia





## NexusCharge

Join us in leading the charge towards a sustainable and intelligent future.

**Alex Carvajal**

**0451 668 400**

[Alexc@beyondev.com.au](mailto:Alexc@beyondev.com.au)

245 St Kilda Road, St Kilda VIC  
3182, Melbourne Australia