

Safety Voice Services for Air Traffic Communications



Flightcell SVS

Always Connected Aircraft

Flightcell SVS (Safety Voice Services) provides reliable air traffic voice communications that are not adversely affected by interference that are typical of dated HF technology



GLOBAL COVERAGE

Flightcell SVS provides worldwide voice communications, ensuring pilots constant connectivity to make and receive calls from air traffic services regardless of the flight path

SUPERIOR AUDIO QUALITY

Flightcell SVS provides superior audio quality compared to HF systems. All voice communications are done over a closed circuit, meaning no radio fading and unwanted external interference

HF RADIO REPLACEMENT

Flightcell SVS provides superior performance for long and short range communications and is an alternative cost effective option to ageing HF technology



ALL-IN-ONE HARDWARE

Flightcell SVS weighs just 1.4lbs (650g) and is a standalone device that requires significantly less space compared to much larger and heavier HF radio systems

SIMPLE INSTALLATION

Flightcell SVS is significantly easier to install in aircraft compared to installing bulky and heavy HF radios systems

IRIDIUM SATELLITE NETWORK

Flightcell SVS provides uninterrupted voice communication between aircraft and air traffic services over the Iridium Satellite network

Flightcell SVS is designed for operators of smaller commercial, military, or private aircraft seeking alternative solutions to legacy HF Radio.

Key Features

Integrated Control Head

The Flightcell SVS is controlled by the user-friendly Control Head.



Prioritized Calling

Flightcell SVS supports priority calling and direct override of calls with lesser urgency.

Safety Voice priority levels:
Emergency / High / Low



Night Vision Options

Both keypads and LCD displays have night vision compliant back lighting.

- NVIS B compliant
- NVIS A compliant option (MIL3009)

User Friendly Interface

Easy to use, with an intuitive and familiar layout.

- Soft touch, backlit silicone keypad
- Configurable settings and phone lists
- Miskey prevention guard
- Convex keys for accurate gloved operation
- Easy to use LCD menu

Dual and Single Modem Options

Choose between having dual safety voice and non-safety calling lines or a single safety voice calling line (note: only air traffic services can make calls to aircraft through safety voice calling line).

All-in-one Satellite Voice Solution

HF RADIO TECHNOLOGY

Flightcell SVS

Light and compact all-in-one SATVOICE solution

×

✓

Cost effective hardware

×

✓

High quality audio with no interference or radio fading

×

✓

Make calls to parties other than Air Traffic Services calls

×

✓

Easy dialling to Air Traffic Services

×

✓

Simple installation

×

✓

Note: Product specifications are correct as at July 2022. Specifications are subject to change without notice.

Simple Installation

Flightcell SVS is light and compact and installation is minimal compared to installing bulky and expensive HF systems.

Installed under local modification (minor change / alteration)

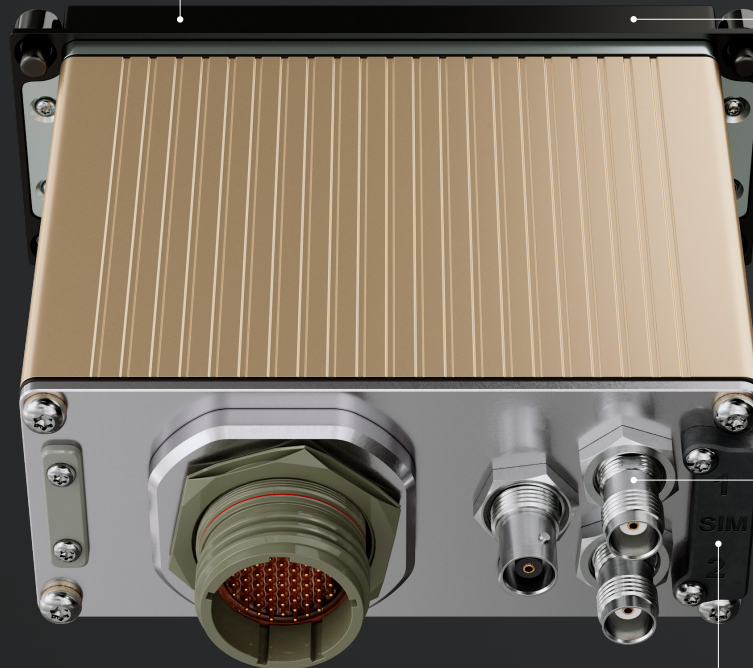
Flightcell SVS meets TSO-C159d requirements however is a non-TSO certified product. Check with your relevant aviation authorities to determine if a non-TSO certified voice communication system is permitted in your jurisdiction.

Dimensions

DZUS mounted the Flightcell SVS is the lightest and smallest SATVOICE system for long range communications.

Weight: 1.4lbs
650g

Size (L×W×H): 4.7" × 5.0" × 2.2"
120mm × 125mm × 55mm



Standalone Device

Flightcell SVS is a standalone SATVOICE solution and does not have to be integrated with any other aircraft systems.

Modem Antenna Connection

One or two Iridium Satellite antennas (TSO certified)

ATS Sim Card(s)

Available through authorized ATS Safety Voice resellers.

Technical Specifications

SATCOM INTERFACES

2 × Iridium L-Band transceivers capable of AMS(R)S Voice operation

2 × Iridium SIM card slots

AUDIO

2 × ICS audio channels (Each channel is dedicated to a SATCOM voice channel)

Internal Mic Bias available for each channel

Side tone functionality available for each channel

GENERAL INTERFACES

5 × Digital IOs (primary call answer/hang up, secondary call answer/hang up, Aural Notification Suppression, EMCON (EMissions CONtrol mode), NVIS mode)

1 × Analog Backlight dimming control input

MAINTENANCE INTERFACES

1 × 10/100 Ethernet port with embedded web server and telnet access

2 × USB serial port

ELECTRICAL

Input voltage 28V DC

Idle power draw 7W

Operating power draw 16W (with both transceivers on an active call)

MOUNTING FASTENERS

DZUS mount

ENVIRONMENTAL

DO160G (pending)

DIMENSIONS

L × W × H 120 × 125 × 55 mm

4.72 × 4.95 × 2.18"

Weight 650 g

1.4 lbs



IRIDIUM SATELLITE NETWORK

Flightcell SVS provides uninterrupted voice communication between aircraft and air traffic services over the Iridium Satellite network

Note: Product specifications are correct as at July 2022. Specifications are subject to change without notice.

About Flightcell

Europe *Flightcell*

North America

Central and South America

Middle East

North Asia

Australia

New Zealand *Flightcell*

About Flightcell

Setting quality standards since 2000, Flightcell is a leader in the global aviation communications systems and hardware industry, leveraging strong strategic relationships with aircraft manufacturers, industry partners and government.

Flightcell's trusted products are highly configurable for operational requirements, with focus on providing solutions to rotorcraft, VLJ, and turbo prop fixed wing aircraft that specialise in aerial firefighting, law enforcement, search and rescue, air medical, oil and gas and military.

Contact

Phone: +64 3 545 8651 (New Zealand)
+46 735 262101 (Europe)

Email: info@flightcell.com

Online: flightcell.com

Flightcell

Always Connected

View Flightcell SVS



flightcell.com