

Flightcell



Reseller Guide 2023

Flightcell Air Medical Solution

- [Flightcell DZMx Overview](#)
- [Flightcell DZMx PLUS Overview](#)
- [Airtime & Tracking Partners](#)
- [Flightcell SmartHUB Overview](#)
- [Marketing Resources](#)

For sales enquiries contact:

philip.h@flightcell.com

hakan.o@flightcell.com

For marketing enquires contact:

jonathan.m@flightcell.com

Flightcell DZMx

Flightcell's DZMx provides air medical operators real time communication between aircraft and emergency departments using cellular & Iridium satellite networks

- Compact all-in-one system (weighs only 1.6lbs / 720g)
- Global voice, messaging, tracking and data
- Full HD digital audio system (input/output) for optimal sound quality
- Cellular data connection supports telemedicine in the air
- Global coverage via Iridium Satellite and cost-effective cellular service when in range
- Wi-Fi & Bluetooth
- Unlocked device - choose your preferred airtime and tracking provider
- DZMx Connect App - use your smartphone to configure DZMx, manage contacts, make calls and send/receive texts
- Simple installation & minimal wiring - save on installation costs



[Learn more](#)

Flightcell DZMx

- Allows aircrew and the Emergency Department to be in constant contact and to share critical patient information
- Real time connection of modular patient monitors to the hospital/emergency department
- Optional Flightcell DZMx Remote Head provides up to two additional remote heads that can be used by medical crew from multiple locations within the aircraft.
- Secure VPN connection for transmission of patient data



Trusted by:



Flightcell DZMx PLUS

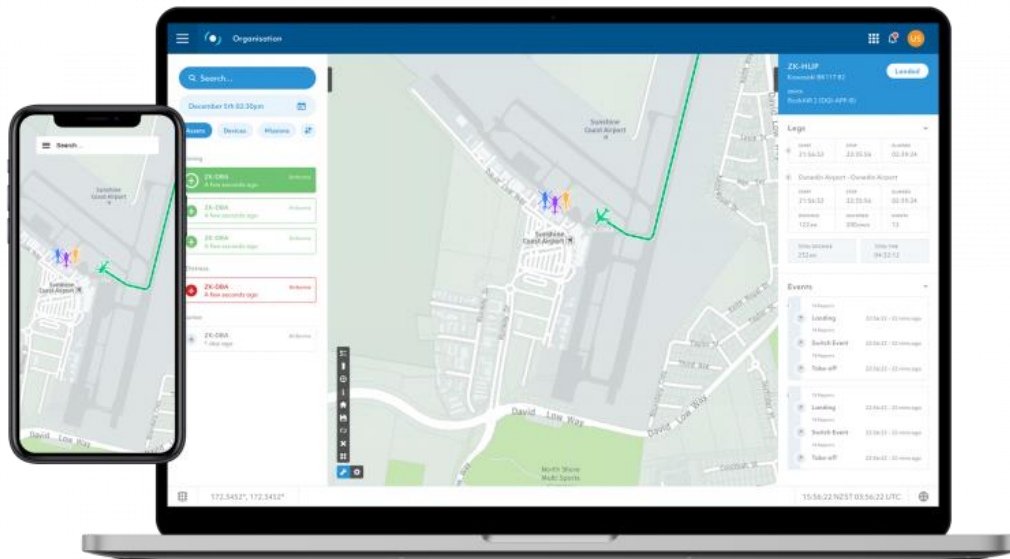
Flightcell DZMx PLUS is controlled from the cockpit or aircraft cabin by the Control Head Unit and has all the features of the Flightcell DZMx, including the same functions, menu structure and user interface

- Designed for the avionics bay, the Flightcell DZMx PLUS simplifies the upgrade of your legacy tray mounted system
- Stay with your current airtime and tracking provider or choose a new provider
- Multiple Control Head Units can be installed across the cockpit and aircraft cabins
- Global voice, messaging, tracking and data
- Full HD digital audio system (input/output) for optimal sound quality
- Global coverage via Iridium Satellite and cost-effective cellular service when in range



[Learn more](#)

Airtime & Tracking Partners



- Multiple global mapping service providers
- Tracking for safety and operational management
- Choose your own tracking and airtime provider
- Auto switching between satellite and cellular enables uninterrupted low-cost tracking
- Comprehensive HD flight path mapping
- Secure data options available

Learn more about Flightcell DZMx approved tracking providers

Flightcell SmartHUB

Flightcell's SmartHUB is the perfect tool for meeting increasing global requirements for mandatory cockpit recording. Also mountable in the aircraft cabin, to record activities between medical crew and patient.

- Cockpit video, audio & flight data recorder
- Also mountable in aircraft cabin
- Capable of supporting two (2) cameras
- Ethernet & USB access point
- Easy data download
- No internal battery
- Wi-Fi access point (optional)
- Flight Viewer software for post flight analysis
(no subscription required for accessing or viewing data)
- Flight training tool
- Simple installation



[Learn more](#)

Marketing Brochures

Flightcell



Flightcell AIR MEDICAL SOLUTION

Always Connected to the Emergency Department

- Transmit 12-lead ECG data to emergency department
- High speed data connection to transmit critical patient data
- Retrieve vital patient records in-flight
- Remote head in aircraft cabin for medical crew
- Iridium push-to-talk (PTT), Wi-Fi and Bluetooth options

Flightcell's air medical solution ensures real time communication between aircrew and the emergency department using satellite or cellular networks.



flightcell.com



Always Connected Aircraft

Flightcell D2Mx



Always Connected Aircraft

Flightcell D2Mx PLUS



Cockpit Video, Audio, Flight Data Recorder & Access Point

Flightcell SmartHUB

All Flightcell marketing brochures can be accessed directly from our website

[Access Marketing Brochures](#)

Flightcell

Always Connected

For sales enquiries contact

philip.h@flightcell.com

hakan.o@flightcell.com

For marketing enquires contact

jonathan.m@flightcell.com

www.flightcell.com

+64 3 545 8651
